

# Exterior 2.3 Essential

Range of Decors / Release April 2023



For you to create



Fundermax



## Contents

Sustainability and the Environment	4
Exterior 2.3   Essential Collection	6
Products	46
Fundermax Individual Solutions	52
Exterior Pro Collections	58

Note: The delivery programme is included with this brochure as an insert.

## Fundermax

No matter whether it's furniture, facades, or interior design: where ideas and materials meet, you'll find Fundermax. As a global market leader in the field of compact panels and a manufacturer of high-quality wood-based materials and laminates, the company is proud to look back on a history spanning 130 years. The continued success is based on the highest quality, innovative and varied design, and sustainable production. Made in Austria—with great love for wood as a natural material, creations, and imagination.

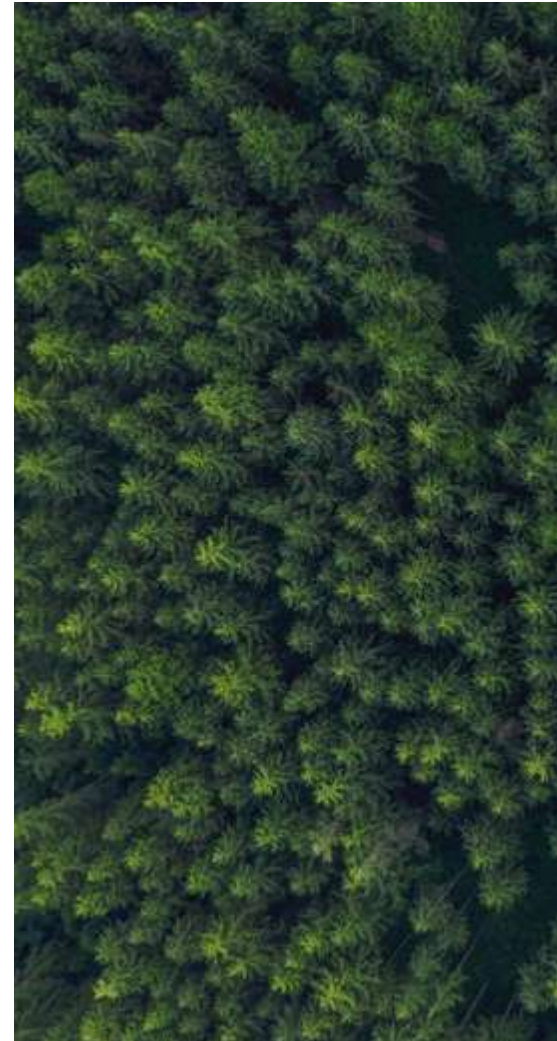
- modern production facilities in Austria and Norway
- around 1,400 employees
- annual sales of €430 million
- part of Constantia Industries AG
- The Austrian Excellence Award (2018)



# 1 Sustainability and the Environment

Offering high-quality wood based compact, and HPL panels with various decors, Fundermax positions itself at the very heart of the architecture of a building. We design and manufacture a broad spectrum of products made from natural materials that are easy to work with, in order to provide architects, designers, facade designers, interior designers, and industrial companies with solutions that stand the test of time.

Fundermax has been processing natural materials with precision and love for 130 years. Today, we are manufacturers of high-quality timber composite materials and a global leader in compact laminates for both internal and external applications. Fundermax stands for nothing less than top quality and excellent design.





### 100% wood and paper



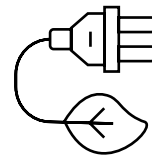
comes from sustainable and certified forestry management.

### 10,000 t CO<sub>2</sub>



saved every year

### 100% green electricity



generated during production.

This and much more is what makes Fundermax a sustainable company, always looking to the future.

Find out more in our Sustainability Brochure via this QR code.



Sustainability Brochure

## 2 Exterior 2.3 | Essential Collection

Fundermax Exterior is synonymous with product quality, sustainability, innovation, and design freedom. We developed the overarching new Exterior 2.3 collection in collaboration with international architects and our experienced teams. In order to accommodate your project requirements, we divided it into two subcollections. In the Essential collection, the focus is on maximum choice of decorative finishes and efficiency. In the Pro Surface collection, it's all about design using surface textures and visual effects. For maximum design freedom, there's Fundermax Individual. Create your very own design using Fundermax custom printing or add accents by machining a design directly onto the material surface without the need for further processing. Whatever form your idea takes, the Exterior 2.3 collection from Fundermax opens up a whole world of design possibilities.

**For you to create.**

### Exterior 2.3 Essential

Exterior 2.3 | Essential combines maximum decor choice with maximum size choice.

All of the decors in this collection are supplied in the following five sizes and with the NT surface:

- 2,800 x 1,300 mm = 3.65 m<sup>2</sup>
- 4,100 x 1,300 mm = 5.33 m<sup>2</sup>
- 3,670 x 1,630 mm = 5.98 m<sup>2</sup>
- 2,800 x 1,854 mm = 5.19 m<sup>2</sup>
- 4,100 x 1,854 mm = 7.60 m<sup>2</sup>

For details, see the delivery programme insert.

#### NT surface

A silky matte effect creates a delicate shimmer and, together with the fine hammered texture, the result is an aesthetic overall appearance.



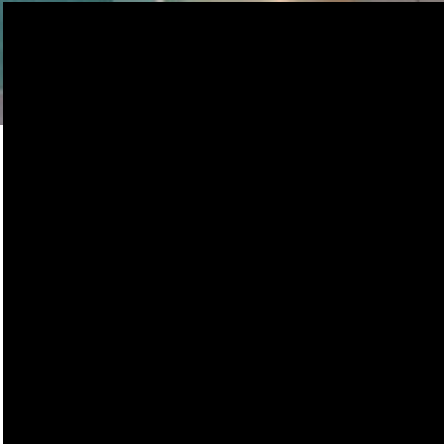
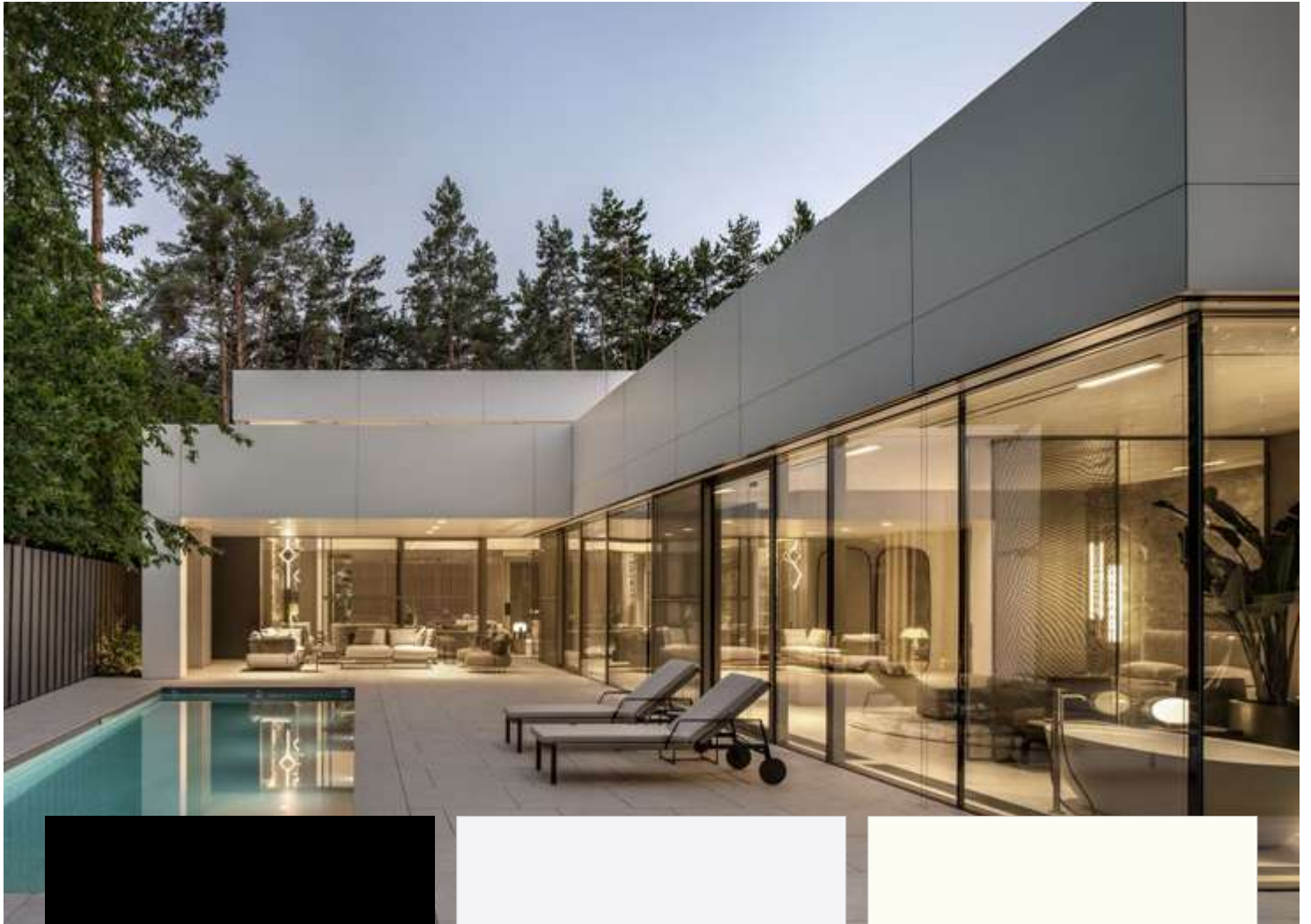
## Colour

Architecture means providing perspectives and having a powerful influence on public perception.

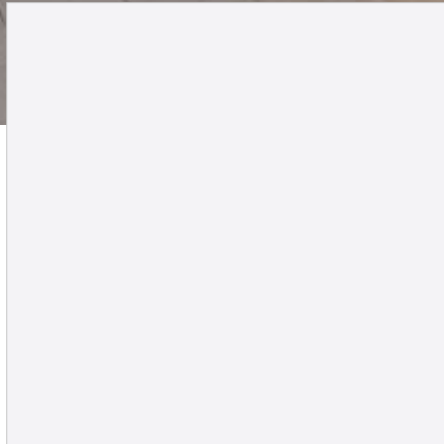
In our Exterior 2.3 | Essential Colour range, you'll find a full spectrum of colours to allow the message of the architecture to be conveyed in a stand-alone way that makes it one of a kind.

**For you to create.**

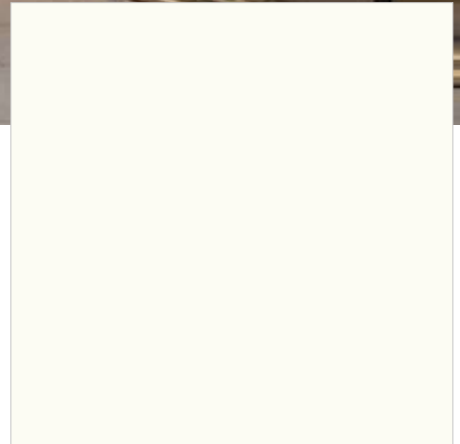




**0080** Black



**0091** Starlight



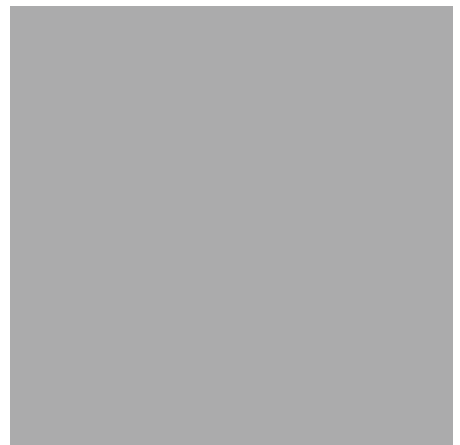
**0085** White



**0070** Carbon Grey

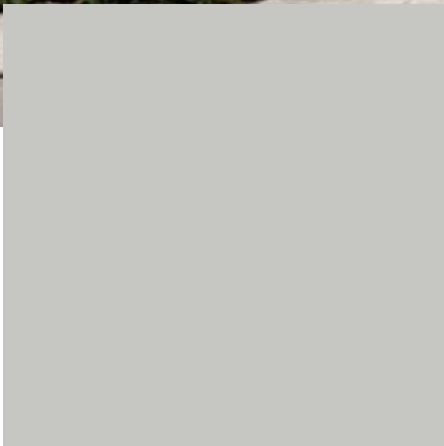


**0776** Concrete Grey



**0753** Cool Grey Medium

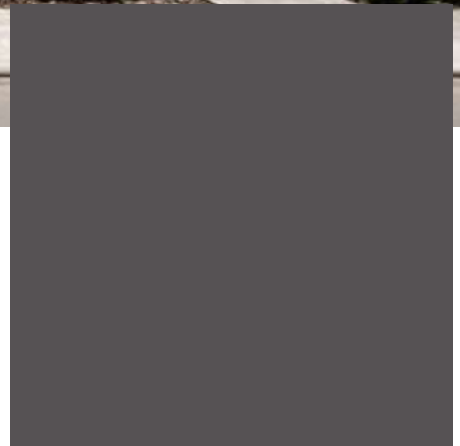




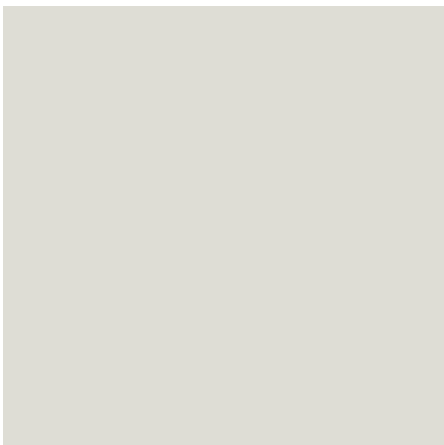
**0074** Pastel Grey



**0075** Dark Grey



**0077** Charcoal



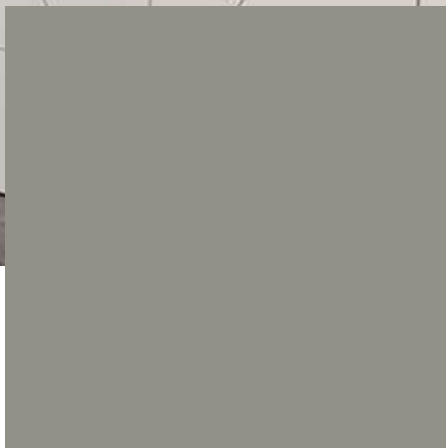
**1203** Grey



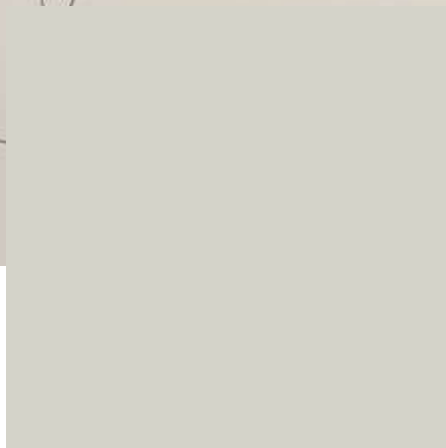
**0762** Neutral Grey Medium



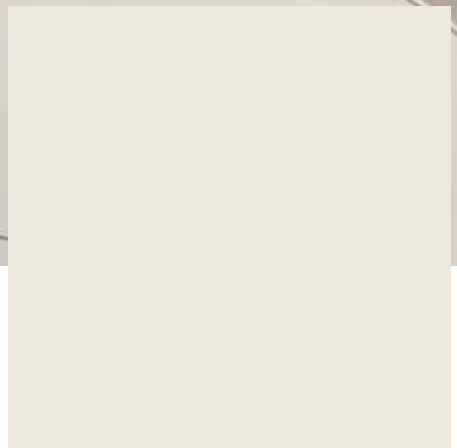
**0900** Dark Cyber Grey



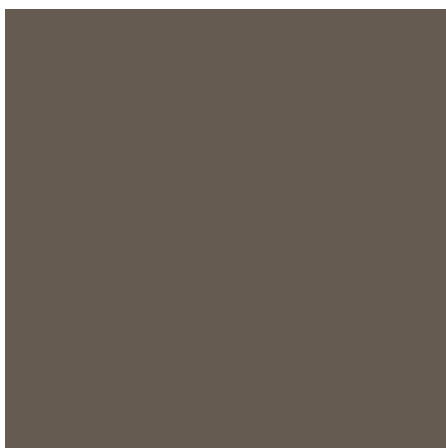
**0747** Medium Grey



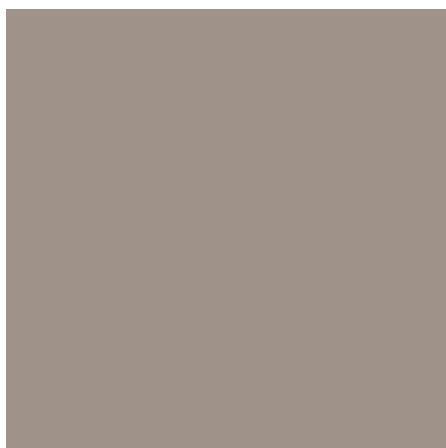
**0741** Birch Grey



**0742** Pebble Grey



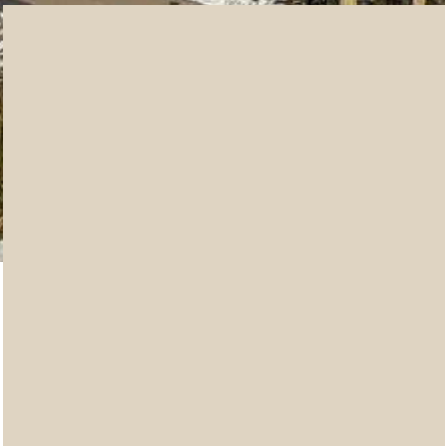
**0887** Dark Offroad Greige



**2206** Fango



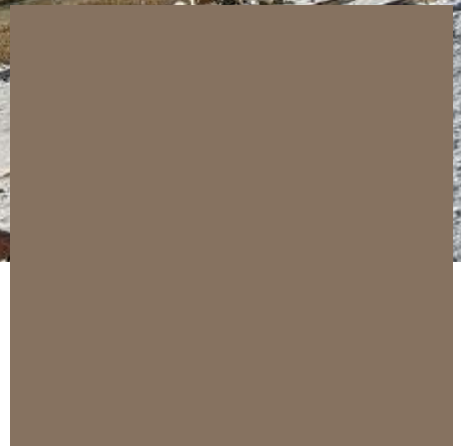
**0071** Fresko



**2289** Tortora



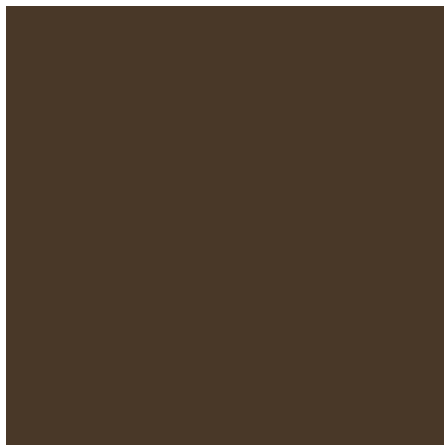
**0144** Costa



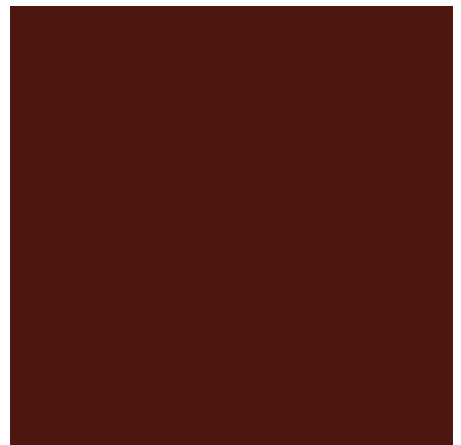
**0768** Sparrow



**0153** Burano



**0657** Sepia Brown



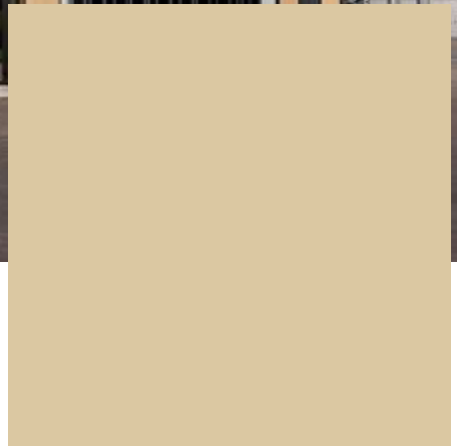
**0875** Chocolate Brownie



**0645 Tobacco**



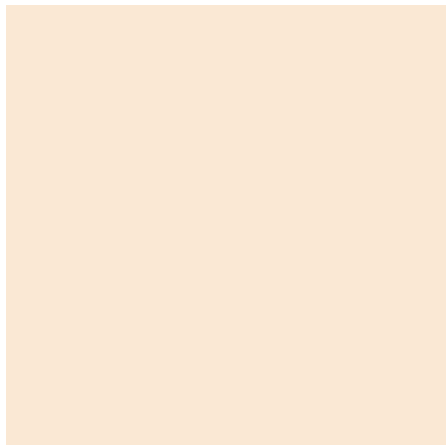
**0098 Mandola**



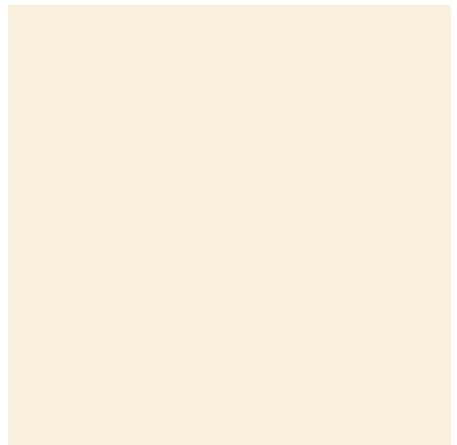
**0081 Alpaka**



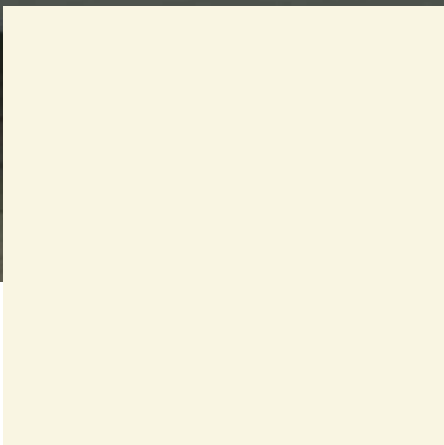
**0627 Hygienic Beige**



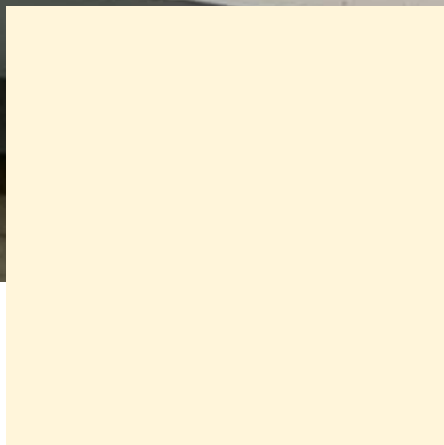
**0651 Cream**



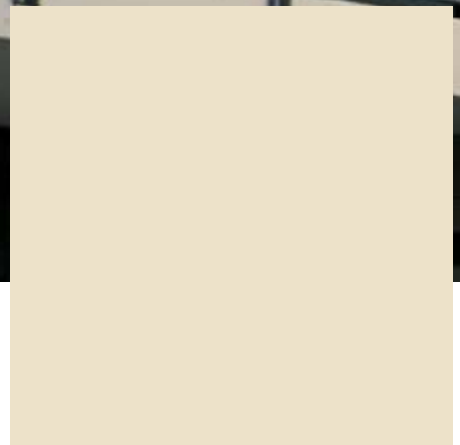
**0733 Hygienic White**



**0073** Pale Ivory



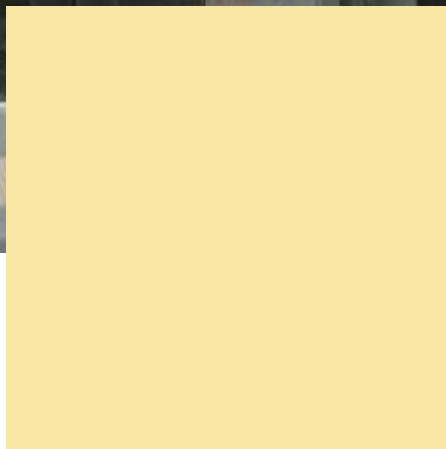
**0851** Winter White



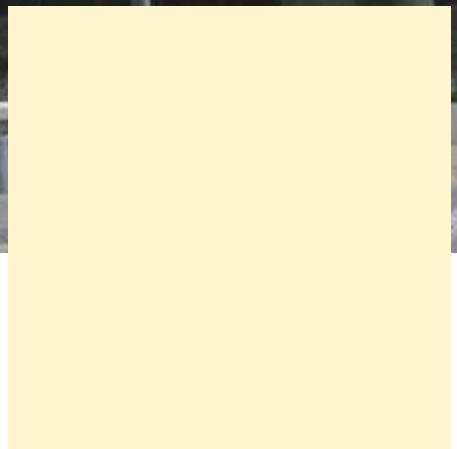
**0066** Sand



**0864** Mustard



**0654** Jasmin



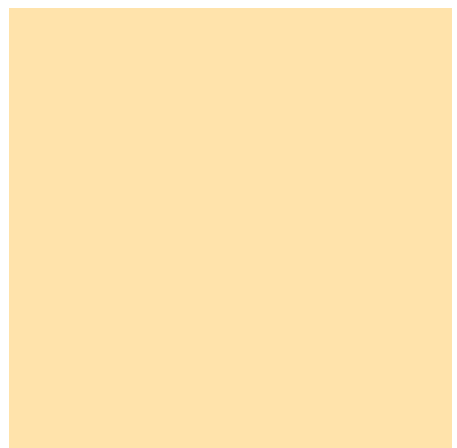
**0065** Ivory



**0865** Lemon



**0647** Golden Yellow



**0687** Maize



**0736** Saffron



**5032** Cinnamon



**0873** Red Pepper



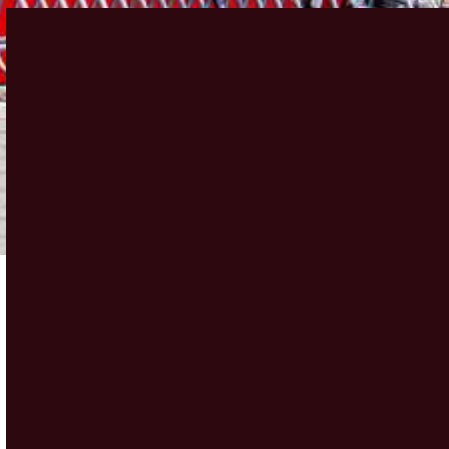
**0661** Terracotta



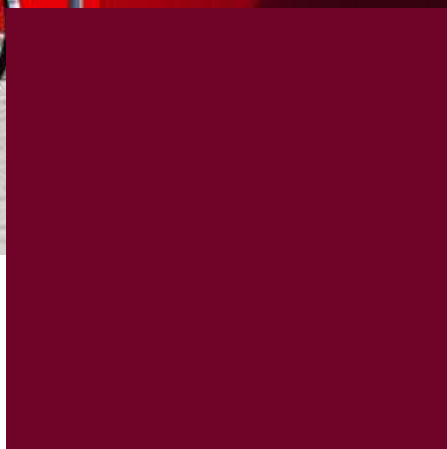
**0691** Purple



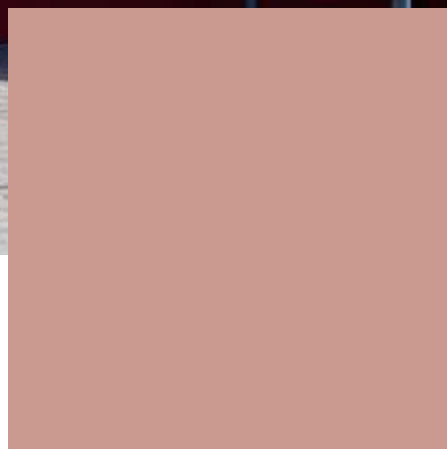
**0874** Maroon



**3007** Black Red



**0680** Wine Red



**0020** Ballerina



**3003** Rubinus Red

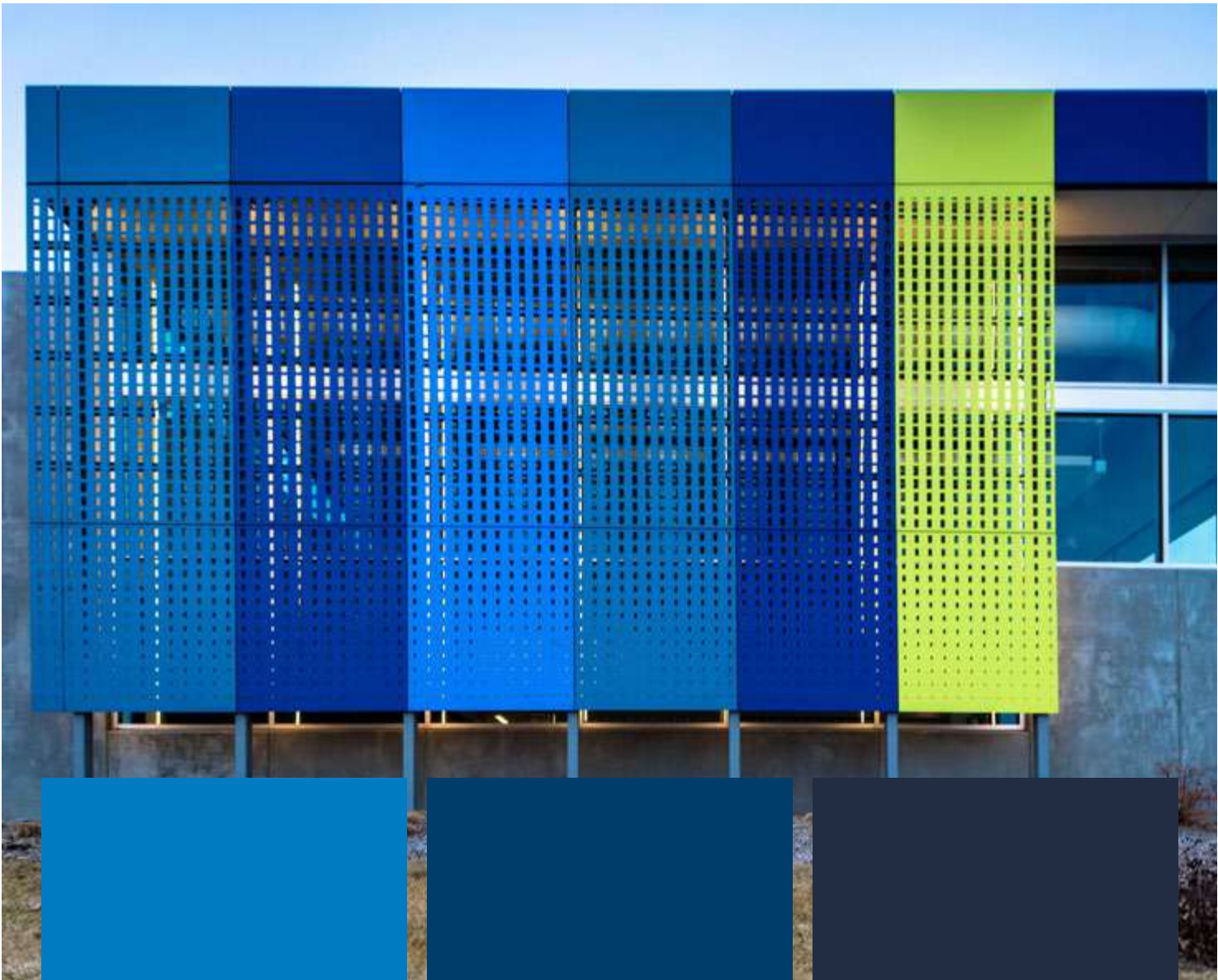


**0689** Dark Red



**0674** Mars Red

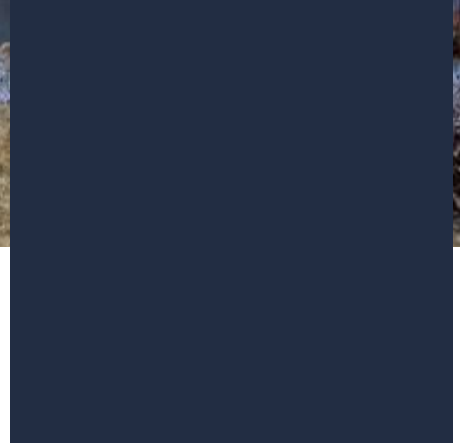




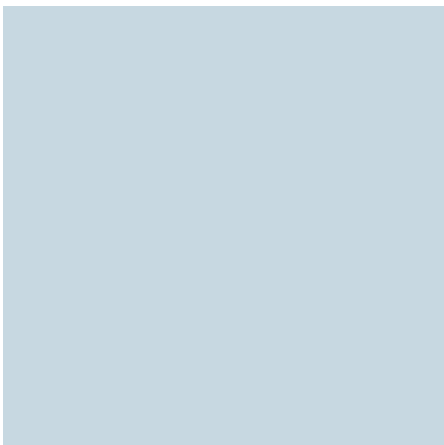
**0717** Atlantic



**0237** Gentian Blue



**0702** Night Blue



**0706** Glacier Blue



**0703** Dove Blue



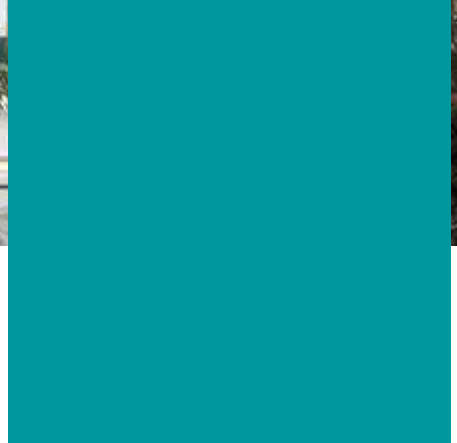
**0712** Steel Blue



**0631** Turquoise



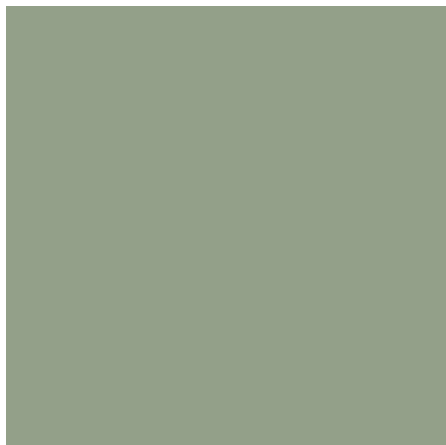
**0617** Petrol Green



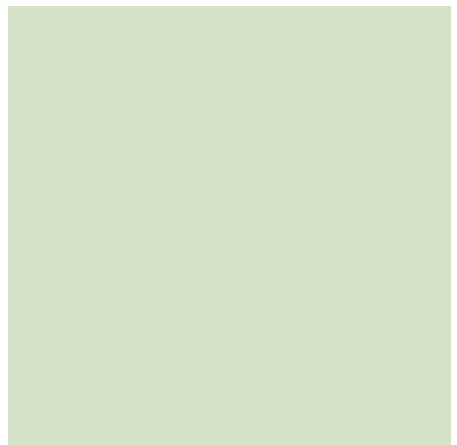
**0056** Atlantis



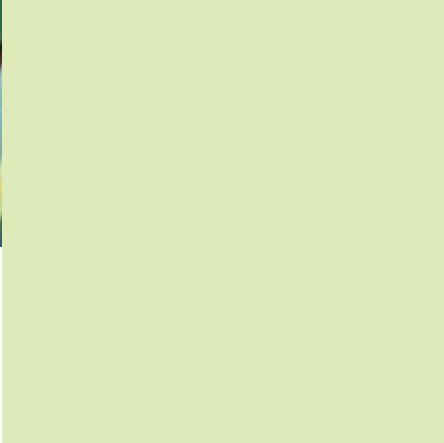
**0059** Dark Green



**0662** Jade Green



**0663** Reseda Green



**0592** Kiwi Green



**0849** Frosted Green



**0623** Green



**0725** Yellowish Green



**0850** Green Valley



**0591** Fir Green


# Nature

Whatever people put together in terms of colour, shape, and texture, the world around us has already long since created it in one form or another. There is so much to discover, and most of it will be found in the smallest details.


In our Exterior 2.3 | Essential Nature range, you'll find both bold and subtle wood textures and shades for your project.

**For you to create.**




A close-up photograph of a dark, almost black, wood-grain surface. The grain is vertical and shows a subtle, wavy pattern. The lighting is even, highlighting the texture of the wood.

**0907** Graphite Flagship Oak

A close-up photograph of a dark grey wood-grain surface. The grain is vertical and shows a subtle, wavy pattern. The lighting is even, highlighting the texture of the wood.

**0908** Grey Flagship Oak

A close-up photograph of a light-colored wood-grain surface. The grain is vertical and shows a subtle, wavy pattern. The lighting is even, highlighting the texture of the wood.

**0925** Butterfly



0801 Fir Platinum



0936 Thunder

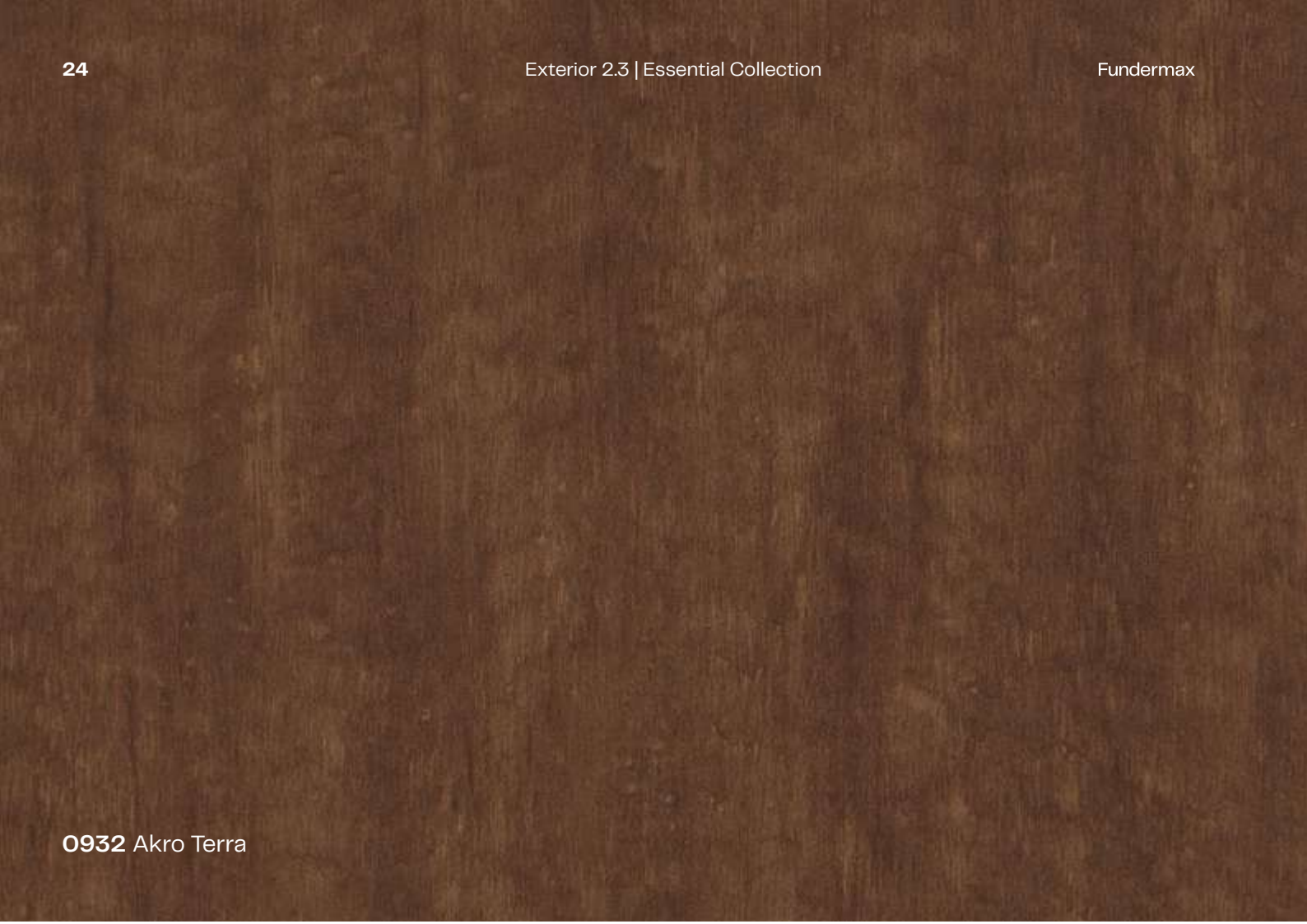


5172 Marshland Oak


**0869** Smoked Marvel Walnut

**0847** Smoked Jazz Oak


**0909** Brown Flagship Oak

A large rectangular area showing a wood texture with a medium brown color and a vertical grain pattern. The texture is slightly uneven, with some darker and lighter spots, giving it a natural, organic appearance.

**0932** Akro Terra

A rectangular area showing a wood texture with a dark brown color and a vertical grain pattern. The grain is more pronounced and consistent than in the top sample, with some subtle variations in tone.

**0824** Brown Bistro Oak

A rectangular area showing a wood texture with a very dark brown color and a vertical grain pattern. The grain is fine and consistent, with a slight sheen that gives it a more refined appearance.

**0901** Dark Rainbow Rosewood



**0870** Dark Honey Marvel Walnut


**5173** Barrique Oak

**0846** Caramel Jazz Oak

0820 Hazel Heritage Oak

0919 Ecuador


0935 Voyager

A close-up photograph of a wood surface with a vertical grain pattern. The wood has a warm, medium-brown tone with visible knots and natural grain variations.


5171 Polar Oak

A close-up photograph of a wood surface with a vertical grain pattern. The wood has a dark, rich brown color with a smooth, slightly wavy grain texture.

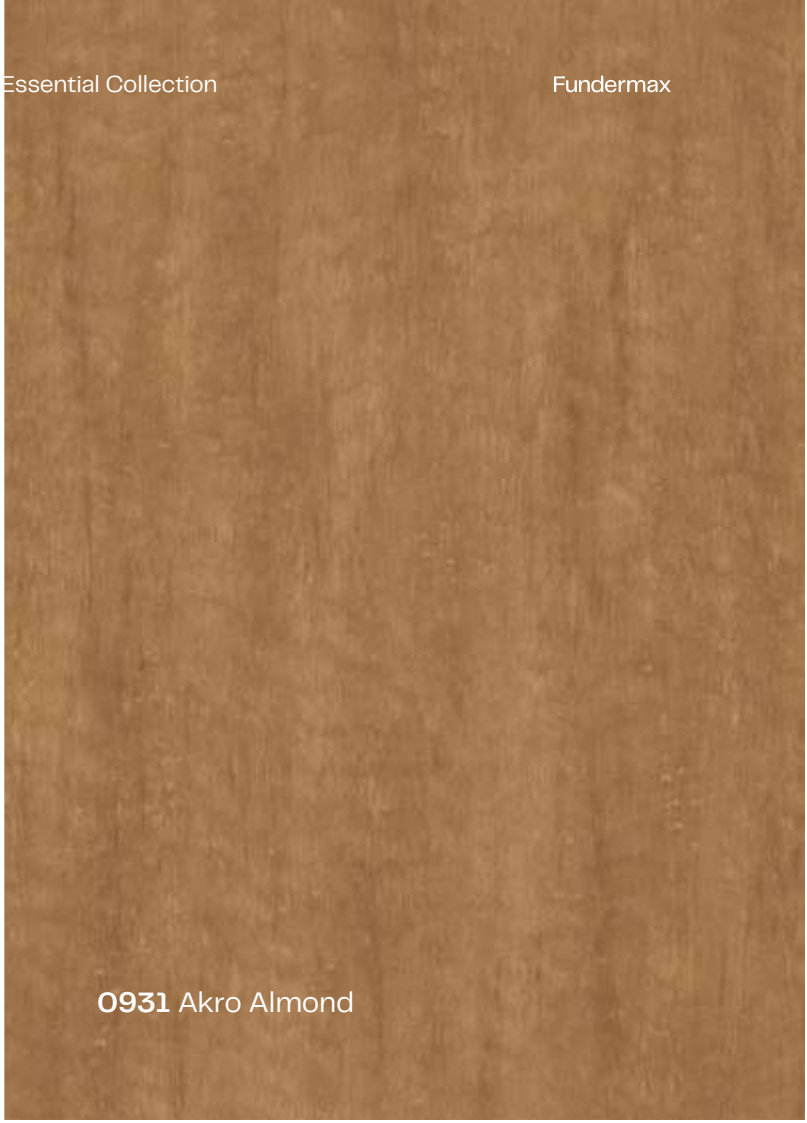
0868 Caramel Marvel Walnut

A close-up photograph of a wood surface with a vertical grain pattern. The wood has a medium-brown tone with a fine, consistent grain texture.

0923 Enigma

A close-up photograph of a light-colored wood surface with a vertical grain pattern. The wood has a natural, slightly uneven texture with subtle variations in tone from light tan to a slightly darker beige.

0125 Natural Oak

A close-up photograph of a medium-brown wood surface with a fine, uniform grain. The texture is smooth and consistent across the entire surface, with a rich, warm color palette.

0931 Akro Almond


A close-up photograph of a dark brown wood surface with a prominent, wavy grain pattern. The wood features several dark, irregular knots and a rich, textured appearance with deep shadows and highlights.

0927 Creek

0924 Taurus

0922 Amazon

0803 Tyrol Pine



0601 Sun Pear



0168 Akro Rust



0169 Akro Ruby

**0160** Dark Afro

**0161** Light Afro

**0162** Afro Sahara

# Material

Witness the unyielding power of nature, strong accents, and smooth textures in natural harmony, moving within itself, constantly in motion. It's a fascinating interplay of texture, colour, and material.

In our Exterior 2.3 | Essential Material range, you'll find designs that reveal something new every time you look at your project.

**For you to create.**







**0496 Colosseum**



**0421 Venus**



**0426 Loft**



0394 Moonwalk




0861 Grey Eclipse Quartzstone




0497 Stonehenge

A color swatch showing a mottled, aged patina in shades of brown, tan, and grey.

0793 Patina Tin

A color swatch showing a dark, textured grey with subtle variations in tone.

0027 Prado Agate Grey

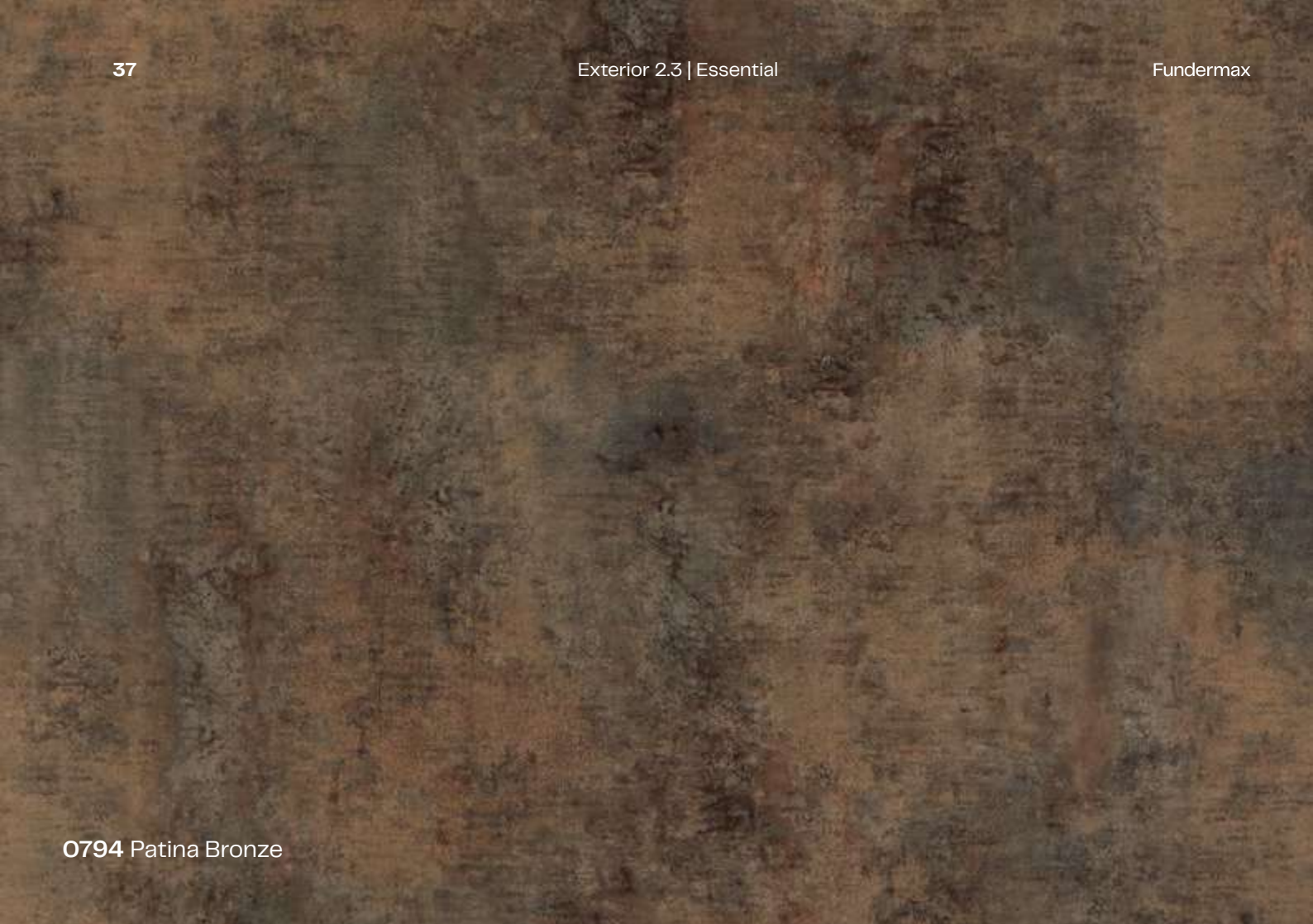
A color swatch showing a light, textured grey with subtle variations in tone.

0026 Prado Alu Grey

0808 Desert Rose Sandstone

0406 Rockstar

0805 Cosmopolis




0794 Patina Bronze



0429 Corro



0028 Prado Brown



0603 Ardens



0798 Tambora



0386 Blues

0159 Afro Black

0804 Metropolis

0799 Blackjack



**0428** Cave



**0158** Afro Grey



**0894** Black Pearl Concrete



**0903** Urban Galaxy Limestone

**0902** Black Stingray Limestone

**0898** Porto Nero Slate



0427 Skyline



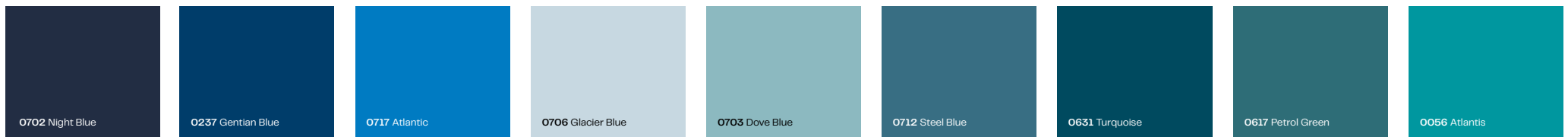
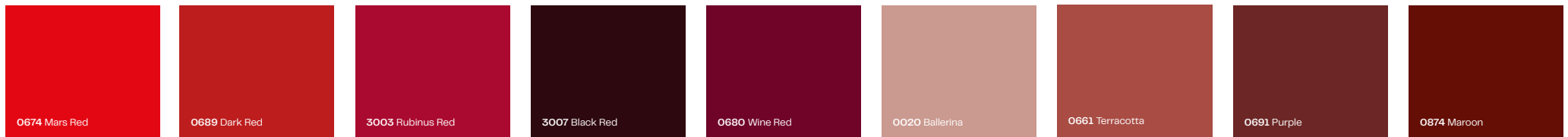
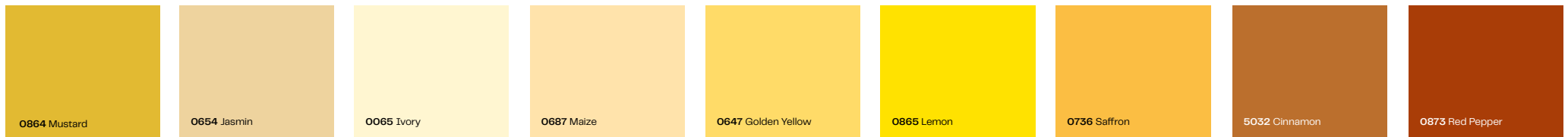
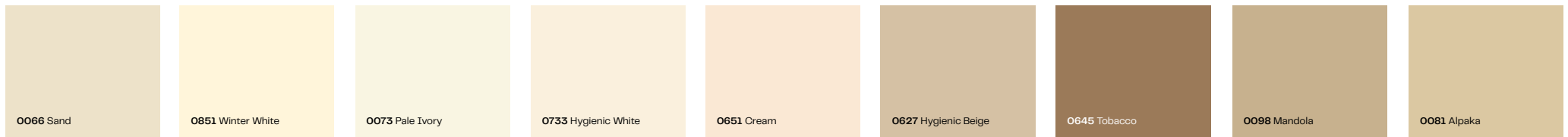
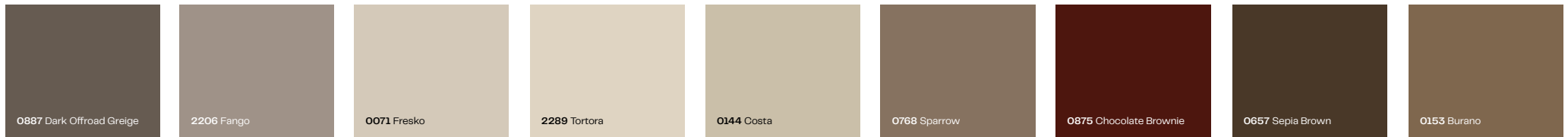
0860 White Blizzard Quartzstone



0897 Grey Cliffhanger Slate



# Decor overview



<b>0591</b> Fir Green	<b>0850</b> Green Valley	<b>0725</b> Yellowish Green	<b>0592</b> Kiwi Green	<b>0849</b> Frosted Green	<b>0623</b> Green	<b>0059</b> Dark Green	<b>0662</b> Jade Green	<b>0663</b> Reseda Green
<b>0907</b> Graphite Flagship Oak	<b>0908</b> Grey Flagship Oak	<b>0925</b> Butterfly	<b>0801</b> Fir Platinum	<b>0936</b> Thunder	<b>5172</b> Marshland Oak	<b>0869</b> Smoked Marvel Walnut	<b>0847</b> Smoked Jazz Oak	<b>0909</b> Brown Flagship Oak
<b>0820</b> Hazel Heritage Oak	<b>0919</b> Ecuador	<b>0935</b> Voyager	<b>0846</b> Caramel Jazz Oak	<b>5173</b> Barrique Oak	<b>0870</b> Dark Honey Marvel Walnut	<b>0901</b> Dark Rainbow Rosewood	<b>0824</b> Brown Bistro Oak	<b>0932</b> Akro Terra
<b>5171</b> Polar Oak	<b>0868</b> Caramel Marvel Walnut	<b>0923</b> Enigma	<b>0125</b> Natural Oak	<b>0931</b> Akro Almond	<b>0927</b> Creek	<b>0924</b> Taurus	<b>0922</b> Amazon	<b>0803</b> Tyrol Pine
<b>0426</b> Loft	<b>0421</b> Venus	<b>0496</b> Colosseum	<b>0162</b> Afro Sahara	<b>0161</b> Light Afro	<b>0160</b> Dark Afro	<b>0169</b> Akro Ruby	<b>0168</b> Akro Rust	<b>0601</b> Sun Pear
<b>0394</b> Moonwalk	<b>0497</b> Stonehenge	<b>0861</b> Grey Eclipse Quartzstone	<b>0027</b> Prado Agate Grey	<b>0793</b> Patina Tin	<b>0026</b> Prado Alu Grey	<b>0808</b> Desert Rose Sandstone	<b>0406</b> Rockstar	<b>0805</b> Cosmopolis
<b>0799</b> Blackjack	<b>0804</b> Metropolis	<b>0159</b> Afro Black	<b>0386</b> Blues	<b>0798</b> Tambora	<b>0603</b> Ardens	<b>0794</b> Patina Bronze	<b>0028</b> Prado Brown	<b>0429</b> Corro
<b>0158</b> Afro Grey	<b>0894</b> Black Pearl Concrete	<b>0428</b> Cave	<b>0898</b> Porto Nero Slate	<b>0902</b> Black Stingray Limestone	<b>0903</b> Urban Galaxy Limestone	<b>0860</b> White Blizzard Quartzstone	<b>0427</b> Skyline	<b>0897</b> Grey Cliffhanger Slate

## 3 Products

# Everything Max Compact Exterior can do

Max Compact Exterior panels are thermoset high-pressure laminates (HPL) that meet the requirements of EN 438-6, type EDF, and are produced in high-pressure lamination presses at high temperature.

Dual-cure acrylic polyurethane resin ensures highly effective weather protection, making it particularly well suited to balcony and facade cladding.

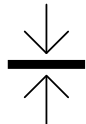
### For extreme weather and environmental conditions\*



highly  
weather-resistant



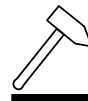
optimally lightfast



dual-cure



scratch-resistant



impact-resistant

### Design freedom and efficiency



Large range of  
decorative finishes



Design using CNC  
systems

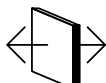


Cost savings—5 sizes,  
little waste

### Installation and Maintenance



Quick installation



Decor on both sides

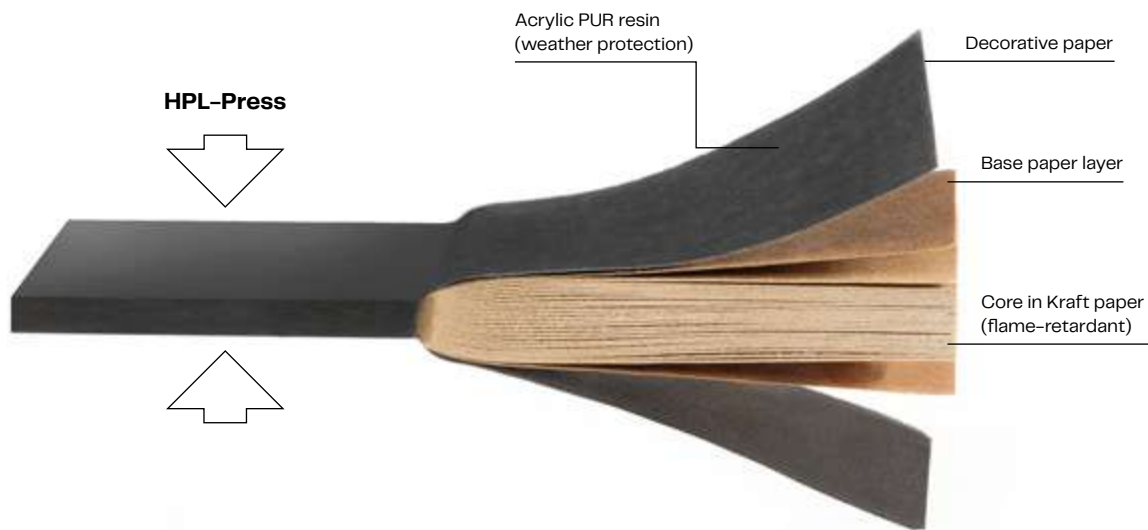


Easy to clean



Resistant to solvents

# Composition of Max Compact Exterior Panels



The 'Biobased Product' label highlights biobased materials that contain a significant proportion of biomass by certifying their content of biobased materials.

A minimum proportion of biobased material is defined for each product family (60% for facade cladding).



FSC certification guarantees the origin and traceability of timber and paper products with a minimum amount of timber.

Certified products come from sustainable, socially responsible, and economically viable forestry management along the entire supply chain.



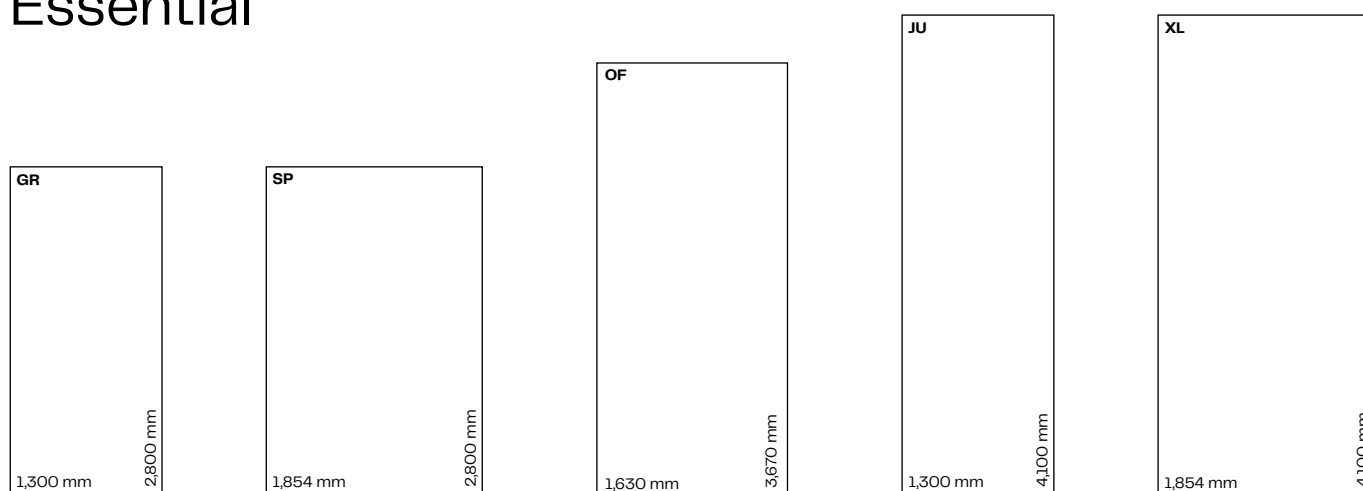
PEFC certification guarantees the origin and traceability of timber and paper products with an obligation for improvement.

Certified products come from sustainable forestry management that respects biodiversity and the vitality of ecosystems.

# Max Compact Exterior F Quality

A high-quality construction product bearing the CE label for use as durable balcony and facade cladding. The panels are thermoset high-pressure laminates (HPL) that meet the requirements of EN 438-6, type EDF, with the most effective weather protection thanks to dual-cure acrylic polyurethane resin.

## Exterior 2.3 Essential



### Surfaces\*

- NT

### Sizes\*\*

- 2,800 x 1,300 mm = 3.65 m<sup>2</sup>
- 4,100 x 1,300 mm = 5.33 m<sup>2</sup>
- 3,670 x 1,630 mm = 5.98 m<sup>2</sup>
- 2,800 x 1,854 mm = 5.19 m<sup>2</sup>
- 4,100 x 1,854 mm = 7.60 m<sup>2</sup>

### Thicknesses

Thickness	Tolerance (EN 438-6, 5.3)
• 2.0 mm	± 0.2 mm
• 4.0 mm	± 0.3 mm
• 6.0 mm	± 0.4 mm
• 8.0, 10.0 mm	± 0.5 mm
• 12.0, 13.0 mm	± 0.6 mm

### Core

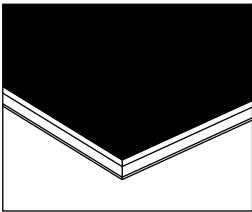
- F Quality
- Flame-retardant
- Brown colour

\* For the best possible appearance of the facade cladding, installation on an aluminum subframe is recommended. Timber is advised against, as an uneven surface can lead to a wavy appearance.

\*\* Panel sizes with tolerances of +10-0 mm (EN 438-6, 5.3) are standard sizes—if absolute size and angle precision is required, cutting around all sides is recommended. Depending on the cut, the net measurement reduces by approx. 10 mm.



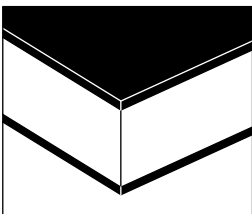
## Options



### **Max Compact Exterior F Quality**

Max Compact Exterior panels are supplied with decors on both sides as standard. The core is made to be flame-retardant, the surface is lightfast, and the dual-cure resin is extremely weather-resistant.

(Fire Test EN 13501-1, B-s2, d0)



### **Composite elements**

To fabricate composite elements, the Max Compact Exterior F-Quality panels can also be supplied with reverse side sanded.

## Max Compact Elements



### **Machining Service**

Fundermax offers the option of cutting the panels and CNC machining. Using state-of-the-art systems, virtually all requirements can be fulfilled, from simple hole drilling for mounting facade panels to intricate machining for balcony components.

## Consultation

Make the most of our architect consultation service and the extensive track record of our application technology. Certifications, approvals, BIM objects, and technical information can be found in the Downloads section on our website. Materials and decorative samples can be ordered from our website around the clock.

### Tip

For a consistently light design for the interior of balconies, Max Compact Exterior panels can also be made with a white (reverse) side (0890 NT – Balkonweiss). The combination of different decors means the stated fixing distances should be reduced by at least 15%.



## Max Compact Exterior—physical data and approvals

Properties	Testing method	Assessment	Standard value <sup>1)</sup>	Typical value <sup>2)</sup>
<b>Lightfastness and weather resistance (NT)</b>				
Resistance to artificial weathering*	EN 438-2:2016, Section 29, 3000 h	Contrast: Gray scale Appearance: Degree	Contrast: $\geq 3$ Appearance: $\geq 4$	Contrast: 4–5 Appearance: 5
Resistance to UV rays*	EN 438-2:2016, Section 28	Contrast: Gray scale Appearance: Degree	Contrast: $\geq 3$ Appearance: $\geq 4$	Contrast: 4–5 Appearance: 5
<b>Properties</b>				
<b>Mechanical properties</b>				
Bulk density	DIN 52328 / EN ISO 1183	g/cm <sup>3</sup>	$\approx 1.35$	1.44
Flexural strength	EN ISO 178	MPa	$\approx 80$	Crosswise: 105 Lengthwise: 170
Flexural modulus	EN ISO 178	MPa	$\approx 9,000$	Crosswise: 11,000 Lengthwise: 16,000
Tensile strength	EN ISO 527-2	MPa	–	Crosswise: 95 Lengthwise: 140
Resistance to impact with a large ball	EN 438-2:2016, Section 21	mm	$\leq 10$	5–6
<b>Thermal properties</b>				
Resistance to moisture	EN 438-2:2016, Section 15	%	Mass increase $\leq 8$	2
Dimensional tolerance at high temperature	EN 438-2:2016, Section 17	%	Lengthwise: $\leq 0.30$ Crosswise: $\leq 0.60$	Lengthwise: 0.08 Crosswise: 0.16
Coefficient of thermal expansion	DIN 52328	1/K		18 x 10 <sup>-6</sup>
Thermal conductivity		W/mK		0.3
Water vapor diffusion resistance				approx. 17,200 $\mu$
<b>Building material classes</b>				
Europe building material class	EN 13501-1	MA39-VFA Vienna	Euroclass B-s2, d0 for 6–13 mm**	
Austria facade fire testing	ÖNORM B 3800-5	MA39-VFA Vienna	tested panel thicknesses 8–13 mm	
Switzerland building material class	EN 13501-1	MA39-VFA Vienna	Euroclass B-s2, d0 for 6–13 mm <sup>2)</sup>	
France building material class	NFP 92501	LNE	M1 for 2–10 mm	
Spain building material class	UNE 23727-90	LICOF	M1 for 6–10 mm	
<b>Approvals</b>				
Germany facade approval		Deutsches Institut für Bautechnik, Berlin	6, 8, 10 mm, Approval no. Z-10.3-712	
ETB guidelines for components that protect against falling, from 6/1985 balcony railings		TU Hanover	present (depending on building regulations and railing construction, 6, 8, 10, or 13 mm panel thickness)	
France Avis technique		CSTB	6, 8, 10, and 13 mm, timber and metal subframe, approval No. 36-87 2/16-1749 No. 36-106 2/2/14-1623_V1 No. 36-125 2/2/13-1565_V2 No. 36-125 2/2/21-1809_V1 No. 36-125 2/2/16-1716 No. 36-29 ATT-20/O13_V1 No. 26-29 ATT-20/O14_V1	
WinMark UK		Wintech	A10114	

For the NT surface, a gloss level tolerance of  $\pm 5$  GE is measured at 60°. With regard to colour tolerance, the ÖFHF ([www.oefhf.at](http://www.oefhf.at)) Tolerances data sheet dated 16 January 2017 applies.

1) In accordance with EN 438-6

2) Typical values are given as an example only and may not be consulted in the case of any possible liability of Fundermax (they are not confirmed, guaranteed values). Fundermax only guarantees compliance with standard values.

\* Custom decorative printing: artificial weathering EN ISO 4892-2: 3,000 h; Assessed based on the gray scale EN 20105-A02: 3

\*\* The exception is the Podio balcony flooring panel, Euroclass B-s2,d0 (6–20 mm)

Other and up-to-date tests and approvals can be found in the Downloads section on [www.fundermax.com](http://www.fundermax.com).

Please take into account any currently valid building regulations; we accept no liability in this regard.

Please check whether your construction project complies with the requirements to effectively restrict the spread of fire (e.g., Austria: OIB RL 2, Germany: Model Administrative Provisions – Technical Building Rules, MVV TB, etc.)

This brochure is intended for specialists who are trusted to adhere to the relevant standards, technical regulations, legal requirements, and relevant guidelines relating to building products. Rules have been painstakingly revised, however, we would like to point out that responsibility for proper planning always lies with the planner, and responsibility for correct installation lies with the contractor.

# 4 Fundermax Individual Solutions

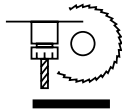
## Application technology

Fundermax has been producing compact panels in Austria for over 50 years. During this time, we've advised and worked with business partners on countless projects. We collaborate with all major system partners in the field of ventilated facades and balconies, and in doing so are constantly expanding our knowledge, which we're then happy to put into the planning and realization of your project. Our experts in the area of building approval and certification deal with ensuring all relevant certifications are up to date and new ones are added. Furthermore, through our in-house services for cutting and CNC machining, we have links with all prominent tool suppliers so that we can give you the best possible advice when it comes to machining.

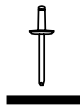
## Application technology services



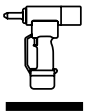
Handling  
compact panels



Machining compact  
panels



Mounting options for  
compact panels



Installation of  
compact panels



Certifications and  
approvals



BIM objects and  
CAD details



Support and  
email contact

## For you to create—Maximum design possibilities with Fundermax Exterior

Facades are a critical architectural element, giving a building its symbolic expression and conveying the intention of the architect. At the same time, they serve as a backdrop for the public space and urban life.

With its huge range of highly weather-resistant and optimally lightfast colours, decors, and surfaces, the Fundermax Exterior collection allows for an extremely broad spectrum of design possibilities. Fundermax custom printing offers maximum design freedom, as well as the option of choosing any shape and machined engraving, which can be designed using modern CNC systems.



**4 01** Project: Detached house for Sarka Kata  
Client: Sarka Kata  
Design: Toth Project  
Designer: László Tóth

## Custom printing

With Fundermax custom printing, everyone has the freedom to design facades, balconies, and other external features that are creative and unique. Your design can either be applied to individual panels, or—as in the example shown—across several panels. This is the ideal option for large-scale images and visual impact.



### Fa. Hauk factory

The new factory is a contrast to the original neo-classical facade of the Vilém Pelly spinning building, which had to be torn down after a major fire in 2020. The historic spinning building was a landmark in the town for more than a century.

The task of Graphite Studio was to give the large new, functional facade of the factory a human scale.

The unique and personalized design suits the surroundings of the site and includes diamond shapes in reference to the company logo. A total of 538 digitally printed Fundermax panels were used to create the whole external facade.



**4 02** Project: Fa. Hauk factory, Czech Republic  
 Client: Hauk s.r.o  
 Design: graphite studio s.r.o  
 Designers: Klára Maršíčková, Tomáš Buble

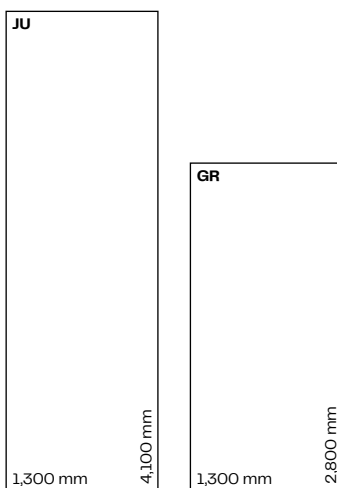
Contact and support  
[Individual.Druck@fundermax.biz](mailto:Individual.Druck@fundermax.biz)



Scan here to view the  
 custom decor data sheet

## Fundermax custom decor options

### A) As panel



### B) Cut and numbered in preparation for installation

On request and using our in-house Compact Elements machining service, we're able to supply Fundermax custom printed panels ready for installation: cut, numbered, and sorted according to your requirements.



Find out more via this QR code  
or at [www.fundermax.com](http://www.fundermax.com)

## Design freedom for facade layout and surface design

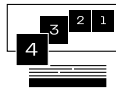
Thanks to modern CNC systems, it is possible to design creative facade layouts and add accents using machined engraving. Fundermax Exterior panels are uniform in their composition, so sealing the edges isn't required.

Make use of our decades of experience in the machining of compact panels and order your project so that it's pre-sorted and ready for installation.

### Compact Elements by Fundermax services



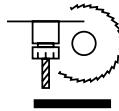
Pre-sorted and labeled according to construction phase



Pre-sorted, labeled, and palletized ready for installation



CNC surface design



Machining compact panels

### Advantages

- No personal risk when cutting
- Precision machining results
- Can be delivered without offcuts on request, reducing workload when closing down the construction site
- Numbering, palletizing, and sorting in preparation for installation makes construction site logistics easier and saves space





4 03



4 04



4 05



4 06

- 4 03** Facade layout  
Project: Aquapark
- 4 04** Facade layout  
Project: Construction of School
- 4 05** Facade layout  
Project: Eurospar St. Valentin
- 4 06** Facade layout  
Project: Veganista



4 07



4 08



4 09



4 10

- 4 07** Openings and engraving  
Project: Cinema
- 4 08** Openings and engraving  
Project: McDonald's Batumi
- 4 09** Openings and engraving  
Project: Detached house
- 4 10** Openings and engraving  
Project: Music school

## 5 Exterior Pro Collections

### Exterior Pro 2.3 Surface

Exterior 2.3 | Essential offers maximum choice of decors and maximum efficiency with the NT surface.

For designs with surface textures and visual effects, you'll find a selection of Exterior 2.3 | Essential decors with the Gloss, Sky, and Paragon surfaces in the **Exterior Pro 2.3 | Surface** collection.



Exterior Pro 2.3 | Surface

NG Gloss

NP Paragon

NY Sky

## NG Gloss

Combined with solid colours, the impact of NG Gloss is bold and expressive, while with wood and other material effects, it is exclusive and elegant. The surroundings are incorporated into the design through the high reflectivity of the surface, adding to its appeal.



## NY Sky

Convincing depth effect and pleasant feel—this texture is spirited, raw, and natural, and complements the range of surfaces perfectly.



## NP Paragon

This matte surface with anti-finger print technology is calming and self-assured. This is highlighted by the pleasant and high-value feel of NP Paragon.



## Exterior Pro 2.2 Podio

Weatherproof, slip-resistant and scratch-resistant, these are just a few criteria that our specially developed balcony panel Max Compact Exterior Podio with Hexa surface meets. Due to the easy installation by screwing or gluing as well as the slip resistance according to R10 DIN 51130 and DIN 51097 it is perfectly suitable for balconies, stairs and landings. Because of the selection of different decors, the plate leaves nothing to be desired.



Exterior Pro 2.2 | Podio



# Exterior Pro 2.2 Authentic

Each decor of the Authentic Collection is available in three surface finishes:

- NT
- NY
- NH



Exterior Pro 2.2 | Authentic

Lovers of brown and natural tones can now enjoy three completely new decors, all part of the Authentic Natura (AUTN) family.

## Authentic Mocca

Sometimes stronger, milder, darker, lighter—all in all, Authentic Mocca is a more than tasteful composition.

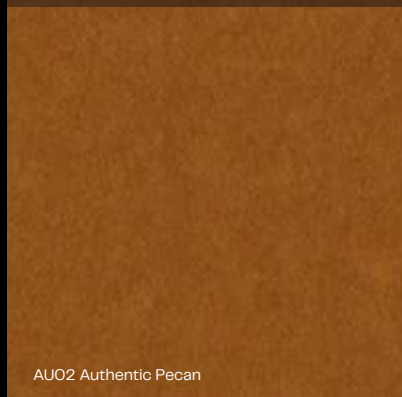


AU01 Authentic Mocca



## Authentic Pecan

With pecans, the treasured content is protected by a resistant shell. The same is true of a building's interior and facade. By using "Authentic Pecan" an aesthetically pleasing look can be achieved.

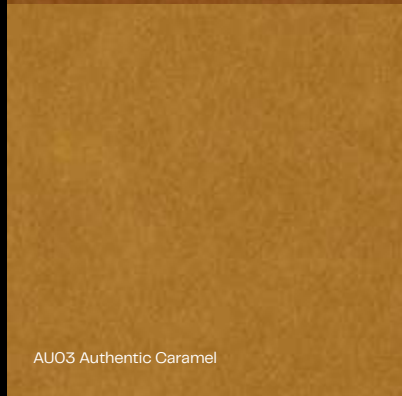


AU02 Authentic Pecan



## Authentic Caramel

Facades in a "salted caramel look" range from golden yellow to honey brown. This decor was inspired by the widely loved caramel candy with its different shades of colour.



AU03 Authentic Caramel



**Fundermax Deutschland GmbH**

Mundenheimer Weg 2  
67117 Limburgerhof, Germany  
info@fundermax.biz  
www.fundermax.com

**Fundermax France S.a.r.l.**

3 Cours Albert Thomas  
69003 Lyon, France  
T +33 (0)4 78 68 28 31  
infofrance@fundermax.biz  
www.fundermax.com

**Fundermax India Pvt. Ltd.**

Sy. No. 7, Honnenahalli, Doddballapur Road,  
Yelahanka Hobli, Bangalore – 560064, India  
T +96113 99211  
officeindia@fundermax.biz  
www.fundermax.in

**Fundermax Italia s.r.l.**

Viale Venezia 22  
33052 Cervignano del Friuli, Italy  
infoitaly@fundermax.biz  
www.fundermax.com

**Fundermax North America, Inc.**

9401-P Southern Pine Blvd.  
Charlotte, NC 28273, U.S.  
T +1 980 299 0035  
office.america@fundermax.biz  
www.fundermax.us

**Fundermax Polska Sp. z o.o.**

ul. Rybitwy 12  
30-722 Kraków, Poland  
T +48 (0)12 65 34 528  
infopoland@fundermax.biz

**Fundermax Swiss AG**

Industriestrasse 38  
5314 Kleindöttingen, Switzerland  
T +41 (0)56 268 83 11  
infoswiss@fundermax.biz  
www.fundermax.com

4/23-PR:101ENWEB

**Fundermax GmbH**

Klagenfurter Straße 87–89, 9300 St. Veit/Glan, Austria  
T: +43 (0)5 9494–0, F: +43 (0)5 9494–4200  
office@fundermax.at  
www.fundermax.com

MEMBER OF *Constantia* INDUSTRIES

**Legal notice:**  
Fundermax GmbH, 9300 St. Veit/Glan, Austria  
Producer: Print Alliance, 2540 Bad Vöslau, Austria

